



# Torre BBVA Bancomer

**Mexico City**



**Place**  
Mexico City, Mexico

**Date**  
2009-2016

**Client**  
BBVA-Bancomer

**Construction Cost**  
US\$210m

**Site Area**  
6,620m<sup>2</sup>

**Total Area**  
188,777m<sup>2</sup>

**Office Area**  
78,800m<sup>2</sup>

**Architect**  
LegoRogers

**Structural Engineer**  
Arup/Colinas de Buen SA de CV

**Plumbing Engineer**  
Arup/Garza Maldonado

**Electrical Engineer**  
Arup/DEC Group

**HVAC Engineer**  
Arup/DYPRO

**Lighting Consultant**  
Fisher Marantz

**Cost Consultant**  
INPROS

**Project Manager**  
Jones Lang LaSalle

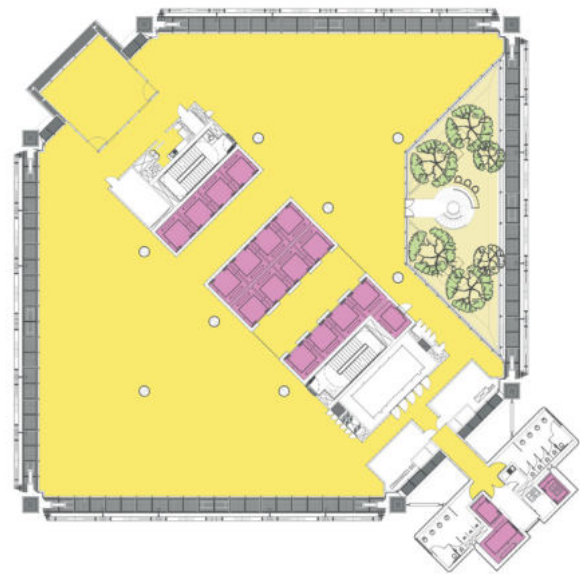
### Awards

2018 LEED Platinium

2018 RIBA International Award

**This building is the most sophisticated, highest-quality building in Mexico. It's a signature building for the bank, for the expansion of their business in North American markets**

Nick Billotti, chairman of Turner International



A new urban landmark on the skyline of Mexico City, the tower marks the gateway to the Paseo de la Reforma from Chapultepec Park. The BBVA Bancomer tower is the result of a collaboration between architectural practices Rogers Stirk Harbour + Partners and Legorreta + Legorreta. In bringing together their different architectural languages yet common values, they have created a building that is both contextual and distinctive.

Mexico City is built on an ancient dried lake and is prone to severe earthquakes so an innovative engineering approach was needed to reduce the risk of tremors. A 'fuse' was incorporated into each of the externally expressed structural beams. Its design focuses the impact of an earthquake by absorbing the shock to protect the rest of the structure. This structural solution makes the tower uniquely safe for a building of its height.

To combat solar gain from Mexico's strong sunlight, a lattice façade system, (which evokes traditional screens or 'celosias') shades the exterior of the building allowing daylight in, and views out.

The building is based on the reinterpretation of traditional office space organisation, offering a variety of new flexible working environments for all users. Sky gardens every nine floors create outdoor space within the tower and provide meeting and break-out areas where people can enjoy spectacular views. Consequently, the architecture promotes a sense of community and interaction between staff.

The 50 storey tower provides approximately 78,800m<sup>2</sup> of prime office space for BBVA Bancomer and can accommodate approximately 4,500 employees.