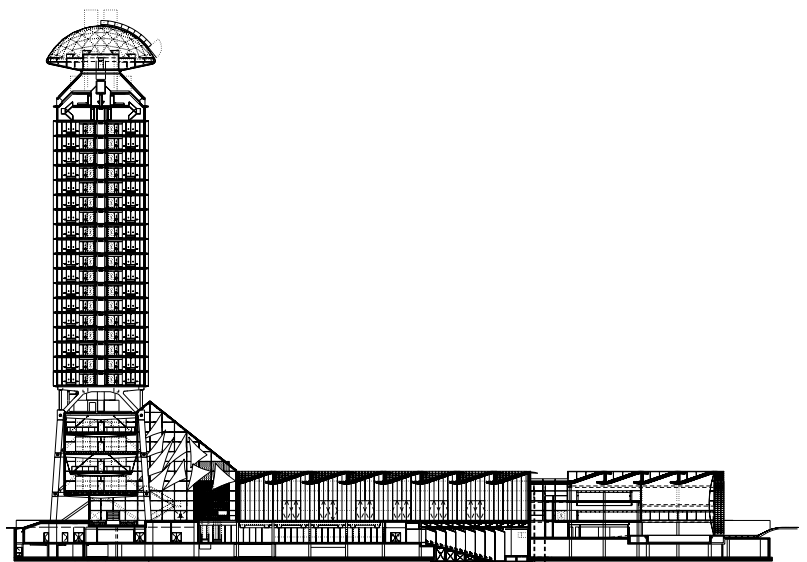




# Hesperia Hotel & Conference Centre

Hospitalet





**Place**  
Hospitalet, Spain

**Date**  
1999–2006

**Client**  
Hesperia Hotels SA

**Cost**  
£30 million

**Gross Internal Area**  
14,000 m<sup>2</sup> (Hotel), 5,900 m<sup>2</sup> (Sports Club), 4,500 m<sup>2</sup> (Conference Centre)

**Area**  
50,000 m<sup>2</sup> (Including Park)

**Architect**  
Richard Rogers  
Partnership

**Structural Engineer**  
Buro Happold/Obiol,  
Moya y Asociados, Brufau  
y Asociados

**Services Engineer**  
BDSP/J G y Asociados

**Quantity Surveyor**  
Atkins, Faithful & Gould/  
G3 Tecnics

**Main Contractor**  
Construcciones Castro

#### Awards

2008  
International High Rise Award



## The major programmatic elements within the design are architecturally expressed through the separation and articulation of each element

RRP's Hesperia Hotel and Conference Centre forms a new landmark in the rapidly developing urban centre of L'Hospitalet, Catalonia's second largest city with 240,000 inhabitants. The brownfield site is 10km west of Barcelona, flanking la Gran Via, a motorway which leads out to the airport and is to be transformed into an attractive boulevard – and a gateway to Barcelona. Fast traffic will be contained in a sunken section, making local traffic the only traffic at street level. The possibility of decking over the sunken section offers the potential for a sequence of vibrant new public piazzas.

The design for the scheme places lift and services towers at the edge of the building as 'servant spaces', with the lower floors of the 30-storey tower devoted to public spaces within an open and transparent 'container'. The scheme comprises a 304-room five-star hotel, a 3,000 m<sup>2</sup> conference centre accommodating 1,800 people, a 500-seat auditorium, 1,500 m<sup>2</sup> headquarters for the Hesperia company and a 4,500 m<sup>2</sup> sports club, with a swimming pool and gym. A public square extends below the tower connecting it to the adjacent low-rise buildings. One of the restaurants is housed in a striking glazed 'dish' located at roof level.

Detailed design work started in September 2000. The project was completed in early 2006, and was formally opened at a ceremony in June 2006.