



Tower Bridge House

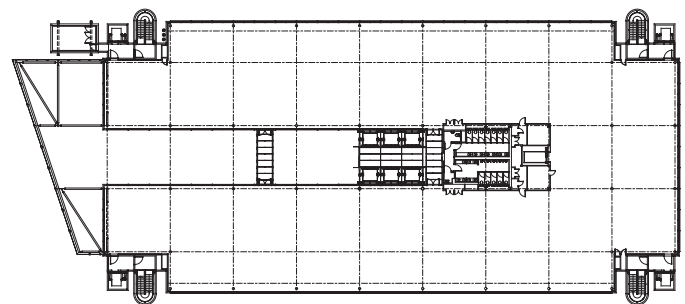
London



Place London, UK	Acoustic Consultant AAD
Date 1987 - 2005	Landscape Architect Richard Rogers Partnership and Charles Funke
Client Taylor Woodrow Development Ltd	Project Manager Buro Four
Cost £45 million	Planning Consultant Montagu Evans and DP9
Area 24,000 m ²	Planning Supervisor Taywood Engineering Ltd
Structural Engineer Waterman Partnership (now the Waterman Group)	Fire Consultant Warrington Fire Research Consultants
Services Engineer Waterman Gore (now the Waterman Group)	Lighting Consultant Richard Rogers Partnership with Waterman Group and Eric Maddock Lighting Design
Quantity Surveyor (Building) Davis Langdon	Main Contractor Taylor Woodrow Construction
Quantity Surveyor (Services) Mott Green Wall	

With new surroundings we think and work differently. It's a transformation that wouldn't have been possible had we not taken the bold step to move to an inspiring new building

Jonathan Watmough, Managing Partner, RPC



The commission for Tower Bridge House dates back to 1987, just after the completion of Lloyd's of London. The project demonstrates the practice's ability to draw on the lessons of Lloyd's, adapting them to the requirement of the commercial market.

The scheme features a giant 'window' facing west to the Tower of London. This all-glass façade reveals the activities within, and is animated by the constantly moving lifts and escalators. A prominent tower marks the gateway to St Katharine's Dock and Tower Bridge. The long north and south elevations of the building are strongly articulated to

create a sense of depth and layering – on the south (dock) side extensive use of solar shading gives it an appropriately solid look.

The scheme reinforces the lower-level public realm, linking public access from Tower Hill tube station to St Katharine's Dock. A new recessed colonnade encourages public movement past the building and on into the new development, enlivening the public space around the docks. A new public piazza with retail areas and cafés looks out over the dock basin itself.