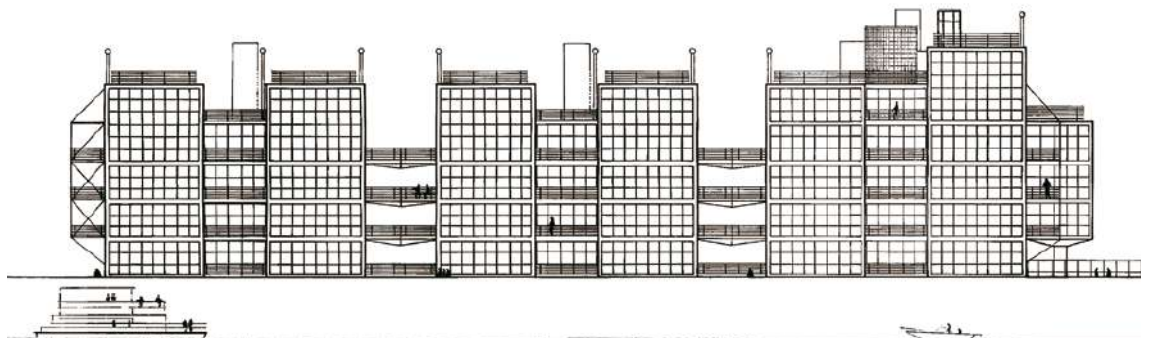




Thames Reach Housing

London





Place
London, England

Date
1984-1987

Client
Croudace Construction Ltd

Area
7,000 m²

Architect
Richard Rogers Partnership

Structural Engineer
Hay Barry & Partners

Services Engineer
The Sinnott Partnership

Quantity Surveyor
Melvyn Newell

Landscape Architect
Rendel & Branch

Awards

1989
RIBA Housing Design Award
RIBA National Award
Civic Trust Award



Floor to ceiling glass walls address the impressive sweep of the Thames – generous cantilevered balconies are set between each block, so as not to interrupt the view

Thames Reach is the residential scheme located adjacent to the complex housing the Rogers Stirk Harbour + Partners headquarters and the River Café. This traditionally industrial area along the north bank of the Thames in west London is now predominantly residential.

The housing at Thames Reach takes its cue from the pre-existing warehousing rather than the surrounding streets of twostorey houses, and has a scale and form appropriate to the riverside. The use of brick, unusual in the practice's

mature work, reflects the attention paid to views through from the street to the river, where there is a generous public promenade. On the street side; the 'rear' of the site with articulated stair and lift towers; the scheme is restrained. On the river frontage, where living rooms are placed to take advantage of the fine views, a regular grid of glazing is broken up by an expressive pattern of cantilevered balconies. The 'nautical' theme is applied with a lightness of touch which recalls the bridges and piers of the 19th century.